

Identification of areas interesting for district heating developments with the Hotmaps toolbox

Aadit Malla – TU Wien

06.04.2022



This project has received funding from the
EU's Horizon 2020 programme under grant
agreement no 101033706.

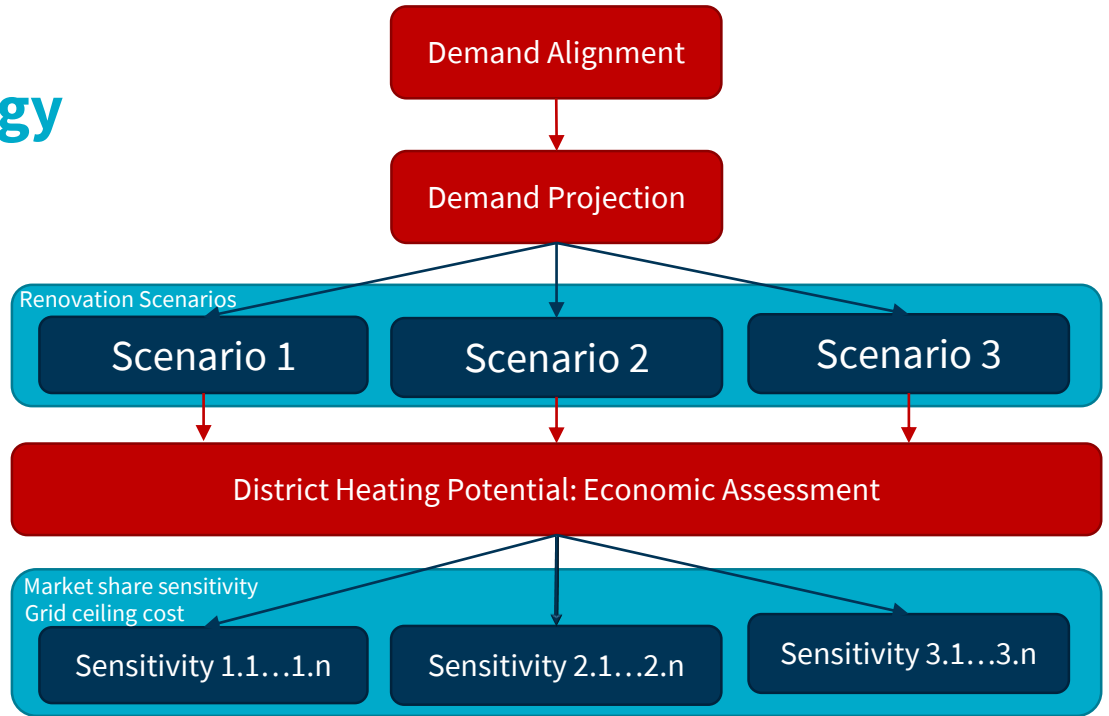


www.actionheat.eu



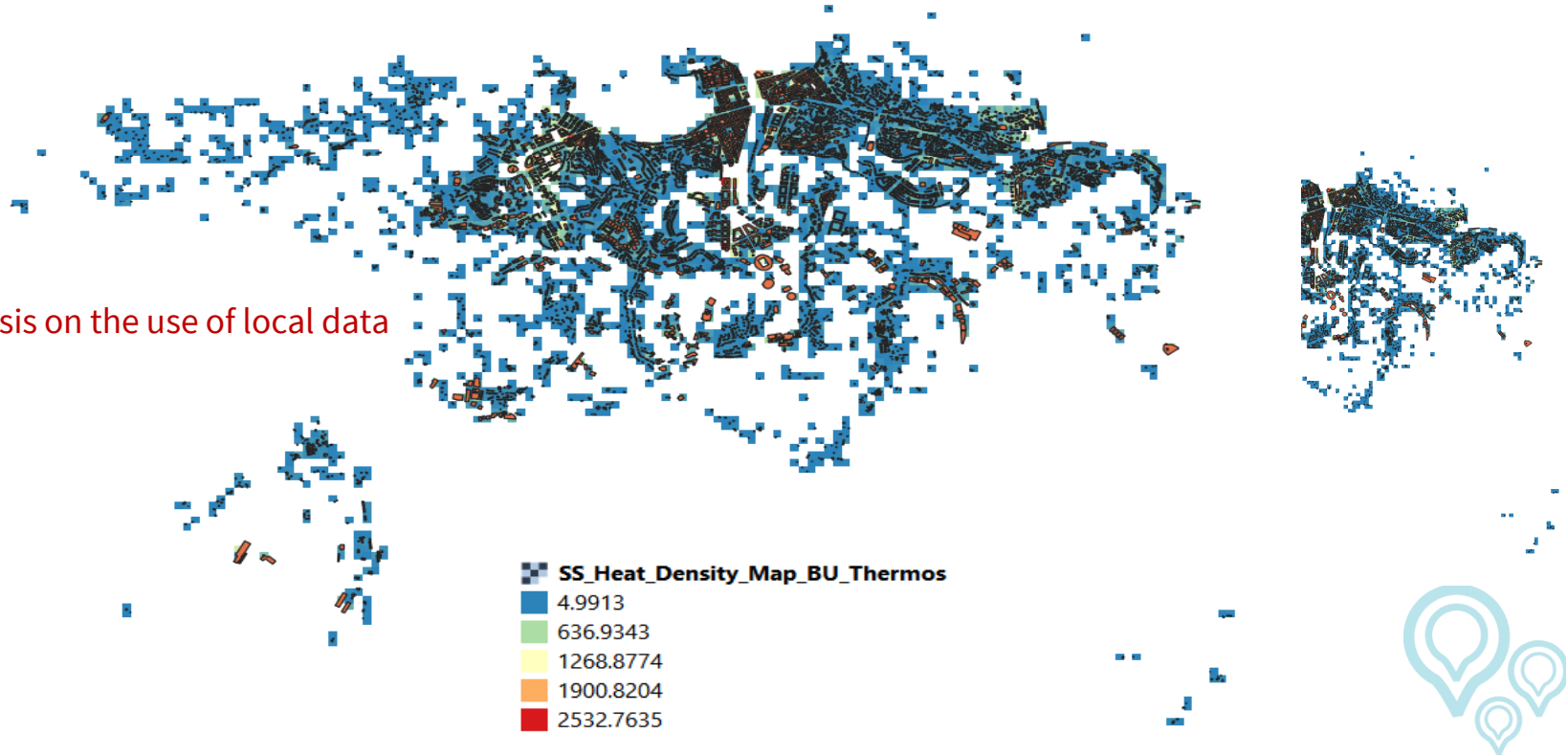
Integrated Methodology

- Demand Data Alignment
- Demand Projection
- Economic Potential Area Identification



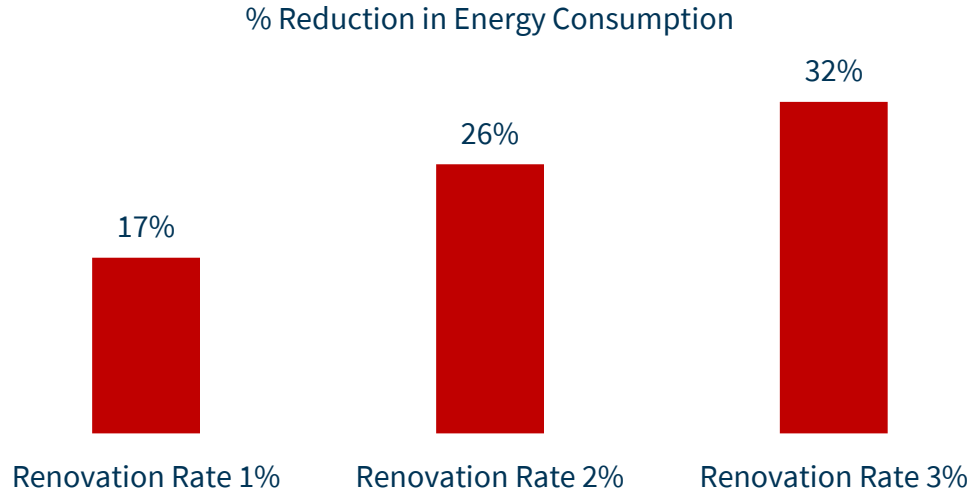
Extracting Data from Thermos

Emphasis on the use of local data



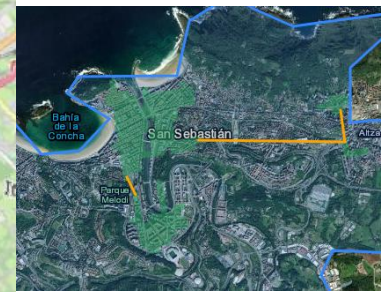
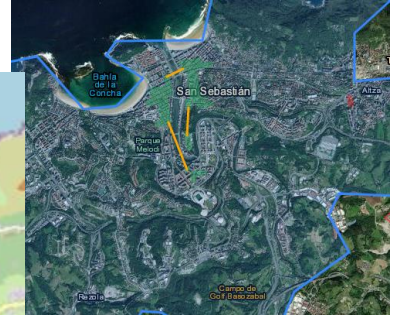
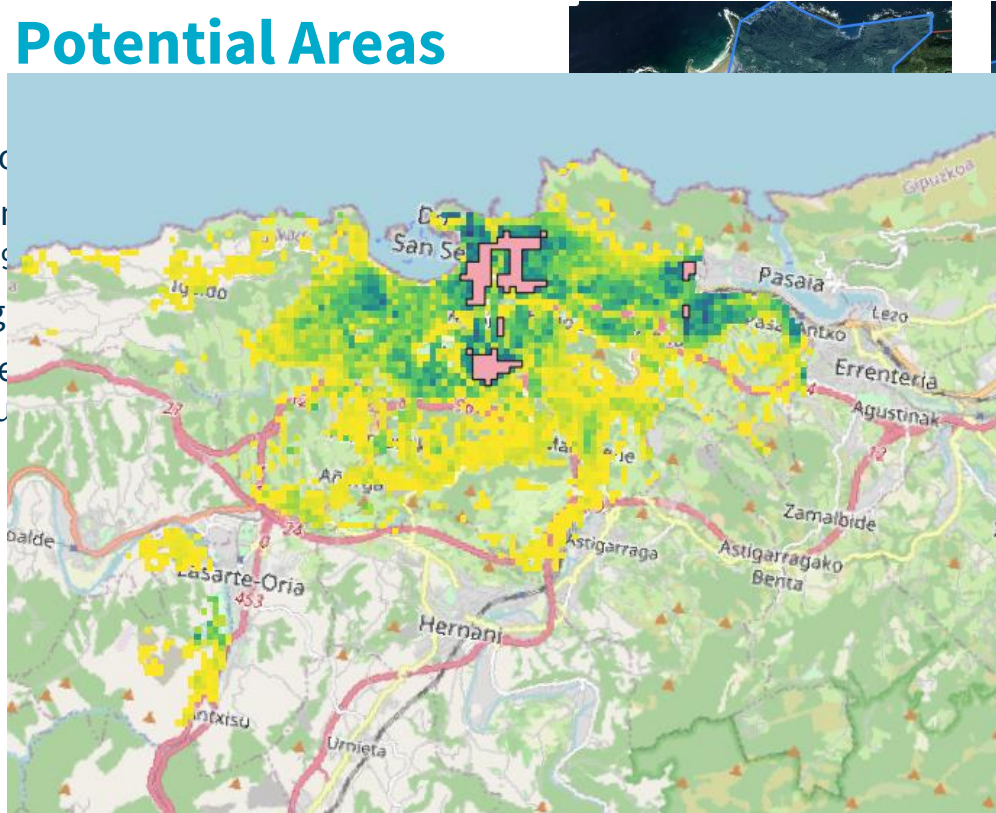
Demand Projection

- CM: Demand Projection Module
- Integrated scenarios have been developed with the Invert/EE-Lab model (www.invert.at)



Economic Potential Areas

- Investment period
- Market Share scenarios
 - 70%, 80% and 90%
- Grid cost Ceiling
- Selection of repeated appearing concu



Limitations

- No Graphical user interface exists for CM: Customized heat and gross floor area density maps.
- CM: Demand Projection module limits the use of the external data for projection
- Final area identification on general rationale, but local geographic knowledge would be crucial.

Conclusion

The methodology provides...

- ... a starting point for the integrated use
- ... possibility of analyzing changing demands based on different scenarios
- ... means of identifying potential economic areas for district heating network for further detailed planning



Thank you.



Aadit Malla
Project Assistant
TU Wien, Vienna, Austria
aadit.malla@tuwien.ac.at



This project has received funding from the EU's Horizon 2020 programme under grant agreement no 101033706.



www.actionheat.eu

